



MiraStall Bathtub Wall Kit



MiraStall Shower Stall Kit



mirastall™

Bathtub Wall Kits... Shower Stall Kits... *Miracle Results in Minutes!**

MiraStall is an elegant, completely watertight solution that adds drama to the bath and shower. Master Cast from real stone particles and bonded polymers, MiraStall is an *engineered composite surface* that's actually stronger and less brittle than natural quarried stone.

Created in popular designer colors and earth finishes, MiraStall is extremely easy to clean, mold and mildew resistant, and unlike solid stone, requires no sealing!

Designed as a do-it-yourself kit, MiraStall is available as either a *Bathtub Wall Kit*, or a full length *Shower Stall Kit* with matching shower base sized to fit in place of standard 30" and 32" deep bathtubs.

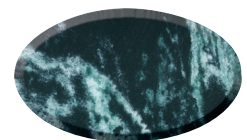
A *miracle solution* for new and remodeling projects where large one-piece units just won't fit!

**Average installation on prepared walls takes less than 1 hour — and finished enclosures are ready to use within 24 hours!*

To see all 80 solid and stone pattern finishes, go to www.mirastall.com



Granite



Marble



Onyx



MiraStall is a master-cast product by Syn-Mar



Installation Instructions

Please read over all instructions **FIRST** to help ensure a fast, correct, trouble-free installation.

Materials and Tools Needed:

- 7-8 tubes of 100% silicone combination adhesive/sealant
- Caulking gun
- Dry towels (to clean excess silicone)
- Tape measure & pencil
- Jigsaw and hole saw (as needed to create plumbing access holes)
- Masking tape
- Carpenters level

STEP 1: Prepare Walls

Walls receiving *MiraStall* panels should be prepared as they would to receive finished paint. Seams and screw indents should be filled and sanded to create a smooth, even surface.

IMPORTANT: Onyx Panels are translucent and allow color variations to show through. Walls should be prepared *and* PAINTED prior to panel installation. (Paint color should compliment panel color.)

STEP 2: Check Fit & Prepare Panels

Identify the Back, Center, and Side panels and “test fit” into position to confirm correct measurements. Wipe down all panels to remove dust to ensure silicone adheres properly.

IMPORTANT: DO NOT measure or cut plumbing access holes in side panels until AFTER the two back panels have been installed to ensure proper measure and hole alignment.

STEP 3: Install Back Panels

Apply a 1/4" diameter bead of silicone adhesive to back of one panel so uniform coverage is achieved (A). Position panel so side edge is tight against corner, and panel bottom edge is tight against tub/shower base. Apply pressure and bang panel firmly with palm to compress adhesive. Repeat for second back panel.

Note: Joint between the back panels will be covered by Center Trim panel (so uneven joint spacing there is acceptable).

STEP 4: Install Side Panels

Measure and cut holes for plumbing access as needed using a common hole saw or fine-blade jigsaw (B). Install both Side panels using the same technique as in **STEP 3**. Be certain side panel edges are tight to corners and tub/shower base.

STEP 5: Install Center Trim Panel

Fill joint between 2 Back panels with silicone BEFORE installing Center Trim panel (C). Fill entire joint to ensure seal. Install Center panel using technique described in **STEP 3**.

IMPORTANT: Measure to ensure Center panel is centered on back wall. Adjust for plumb using carpenters level (D).

STEP 6: Install Corner Moldings

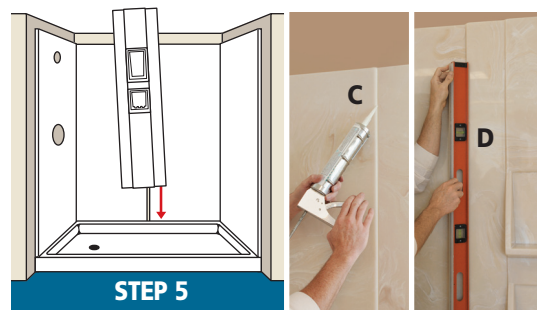
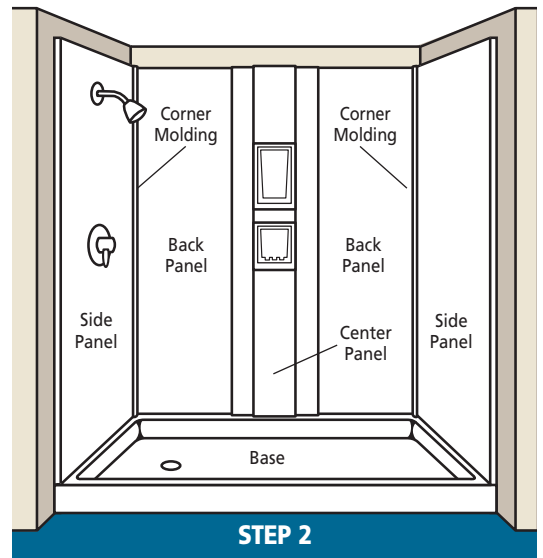
Before installing moldings, fill corner joints with silicone sealant.

Install Corner Moldings by placing bead of adhesive along BOTH back sides of the molding (E). Bead should run the entire length of the molding. Firmly press into position making certain molding is tight to corner and tub/shower base.

Note: Masking tape may help to keep molding in proper position until adhesive dries.

STEP 7: Caulk All Joints

Fill ALL visible joints with sealant, including top joints against walls and joints against tub/shower base. Wipe off excess silicone with towel so seam is neat and watertight.



www.mirastall.com

5 Nutmeg Drive, Ellington, Connecticut 06029

Local: 860-872-8505 • Toll-free: 866-399-0909 • Fax: 860-870-8849